

# EXHÍBÍO® **M-500**

## FIRST TIME SETUP GUIDE



## Exhibio M-500 Components & Accessories



Standing Mount



VESA Mount



Power Adapter



DVI to VGA Adapter

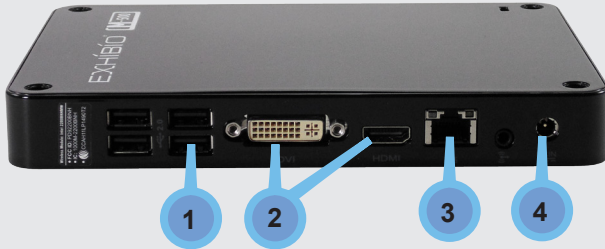


USB Flash Drive





## FIRST TIME SETUP GUIDE



1

### Connect Keyboard and Mouse

Only use a USB Keyboard and Mouse.

2

### Plug in Monitor

Use either a DVI Cable or an HDMI Cable.

*Note: You may use the optional DVI to VGA adapter if required.*

3

### Connect to your broadband connection

Connect using either your network cable or your wireless connection.



4

### Power on the Exhibio unit

Plug in the power to the back of the system.

Press the power button on the front of the unit to power on the system for the first time.

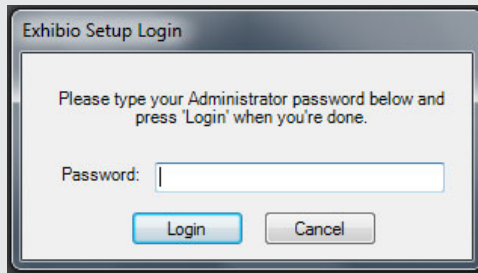
5

### Initializing

Enter the Administrator password and click 'Login'.

The factory-set default password is **exhibio**.

Then Agree to the End User License Agreement that appears.



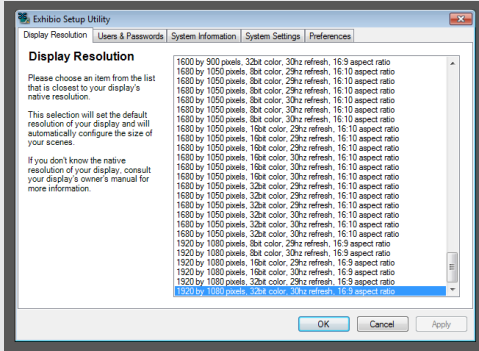
6

### Display Resolution

Select the appropriate resolution for your display, and then click 'Next'.

Consult the owner's manual of your monitor to determine the optimal resolution, color bit depth, refresh rate, and aspect ratio.

You will typically want to choose a resolution with the same aspect ratio as your display to avoid having your content appear stretched out.

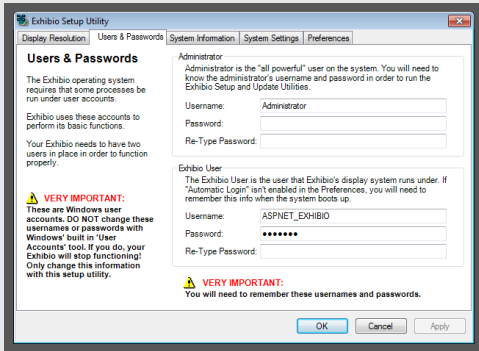


7

## Users and Passwords

Change the Administrator and Exhibio user passwords.

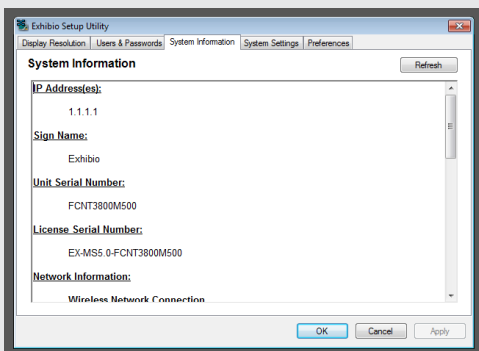
Please write down the username and password for both the administrator and Exhibio User accounts.



8

## System Information

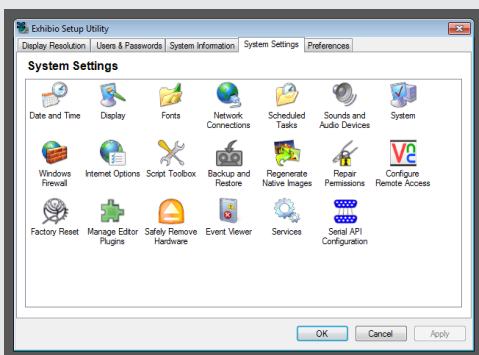
Write down the network IP address of your unit. This is the address you will input into your web browser to access the Exhibio Manager.



9

## System Settings

This section allows complete access to all administrator level settings. Refer to the Software Manual, found on the included USB Key, for detailed information on all tools.

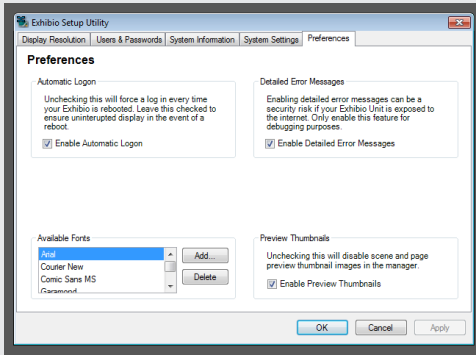


10

## Preferences

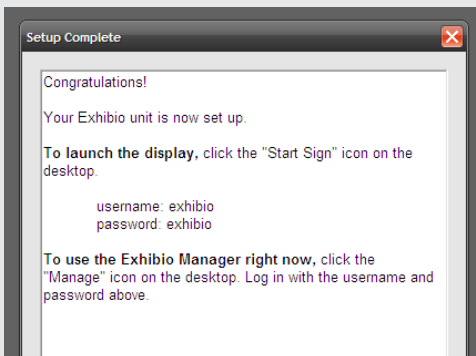
You may check 'Enable Automatic Logon' which will automatically login to the correct Exhibio User upon restarting. Also, you may check 'Enable Detailed Error Messages'.

If you are finished and wish to not setup Live Video or Digital/Analog TV, click 'Finished' and skip to Step 13.



## Setup Complete

When the 'Setup Complete' dialog appears, click 'OK'. You may now remove the keyboard and mouse that you previously attached to the unit. You will only need to use the Setup Utility occasionally from now on. All day-to-day content management tasks are handled by the Exhibio Manager web application.



## OTHER INSTRUCTIONS

### Setting up Portrait Mode

1. Click on the 'Setup' icon on the desktop, and login with your Administrator password.
2. Click on the 'System Settings' tab at the top.



3. Select 'Display' from the icons below.
4. Expand 'Display' in the tree-view on the left, and click 'Rotate Display'. Select either '90 Degrees to the left' or '90 Degrees to the right' depending on how you plan to mount your display. Click 'Apply' at the bottom of the window.
5. Close the NVidia control panel and click on the 'Display Resolution' tab at the top of the 'Exhibio Setup Utility'.
6. Select your new resolution, and click 'OK'.

***Note Closed Captioning will not work with the Live TV Input while in Portrait Mode.***

### **Playing Audio Through HDMI**

1. Click the 'Setup' icon on the desktop.
2. Click the 'System Settings' tab.
3. Select 'Sounds and Audio Devices' from the icons below.
4. Click the 'Audio' tab.
5. Under 'Sound Playback', set the default device to 'NVIDIA High Definition Audio'. Click 'OK'.
6. Click 'OK' again.

### **System Recovery**

To restore your system to its initial factory state perform the following steps.

1. Either hit <F11> at the bootup or click the 'Factory Restore' icon on the 'system Settings' tab of the Exhibio Setup Utility.
2. Click the 'Restore System to Initial State' button.
3. Click 'OK'.
4. Click 'OK' when asked 'All data in Windows

drive will be deleted upon restoration. Do you want to continue?'.

5. The 'System Restoration' dialog will appear showing the progress of the restore operation.
6. Click 'OK' on the 'Completed Restoration. System is going to be restarted' dialog.



