

EXHÍBÍO® [ST-200]

FIRST TIME SETUP GUIDE



Exhibio ST-200 Components & Accessories



Standing Mount



TV Tuner with Input Cable
(USB 2.0 only)



VESA Mount



Over-the-Air Antenna



Power Adapter



USB Extension Cable



DVI to VGA Adapter



USB Flash Drive

Optional Accessories

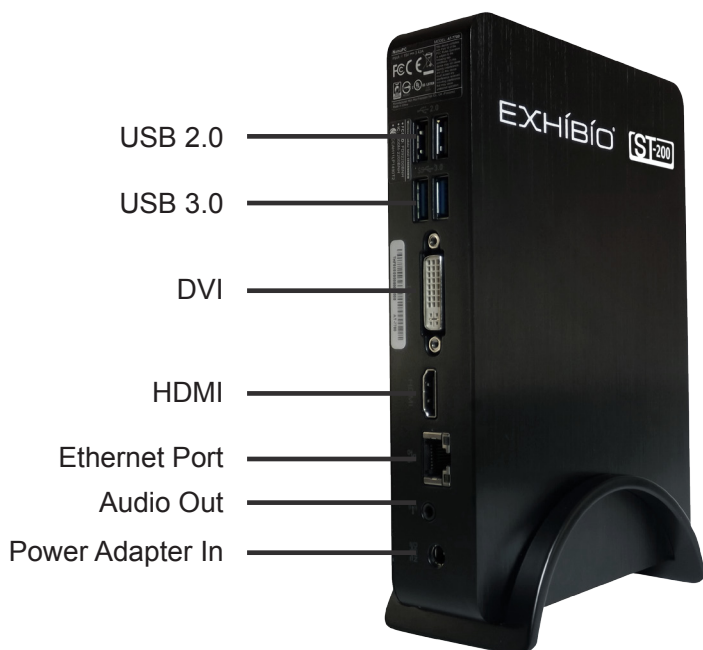
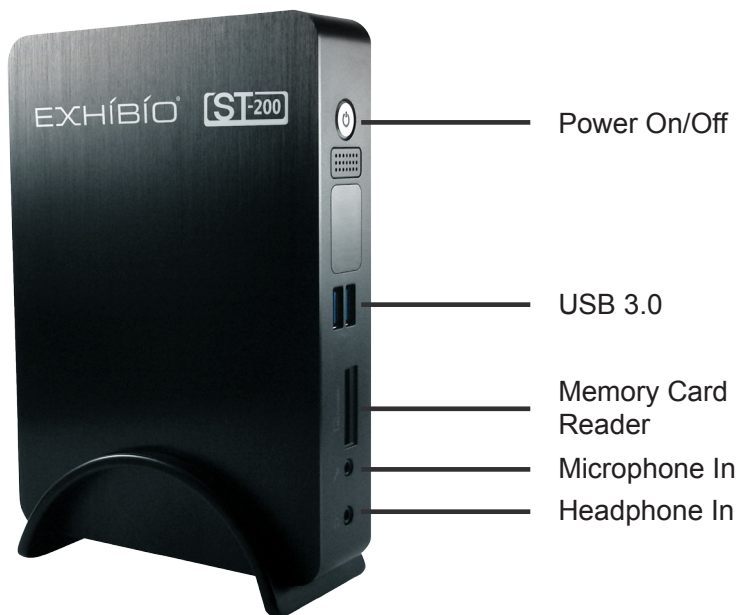


DVD Drive with USB Cable



USB Serial Cable

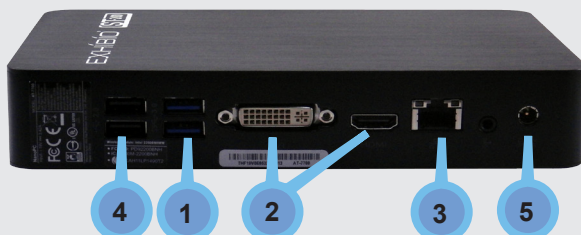
Please contact your Exhibio representative to obtain a DVD Drive and/or USB Serial Cable at **no cost**.





FIRST TIME SETUP GUIDE

**Start
Here!**



1

Connect Keyboard and Mouse

Only use a USB Keyboard and Mouse.

2

Plug in Monitor

Use either a DVI Cable or an HDMI Cable.

Note: You may use the optional DVI to VGA Adapter if required.

3

Connect to your broadband connection

Connect using either your network cable or your wireless connection.

4

Plug in the Digital TV Tuner

This is an optional device to plug in. If you wish to have either live external video or live digital/analog TV, plug the device into a USB 2.0 port only.

Please Note: The TV Tuner will not function properly if it is connected to a USB 3.0 port.



5

Power on the Exhibio unit

Plug in the power to the back of the system. Press the power button on the front of the unit to power on the system for the first time.

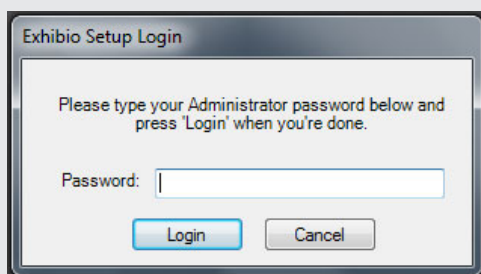
6

Initializing

Enter the Administrator password and click 'Login'.

The factory-set default password is **exhibio**.

Then Agree to the End User License Agreement that appears.



7

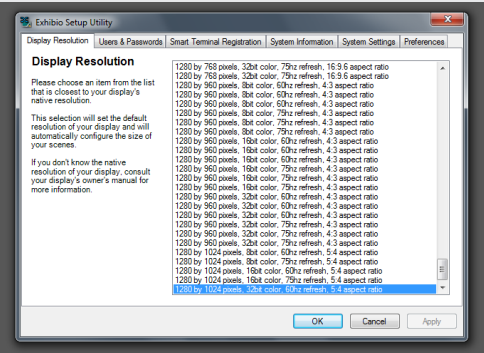
Display Resolution

Select the appropriate resolution for your display, and then click 'Next'.

Consult the owner's manual of your monitor to determine the optimal resolution, color bit depth,

refresh rate, and aspect ratio.

You will typically want to choose a resolution with the same aspect ratio as your display to avoid having your content appear stretched out.

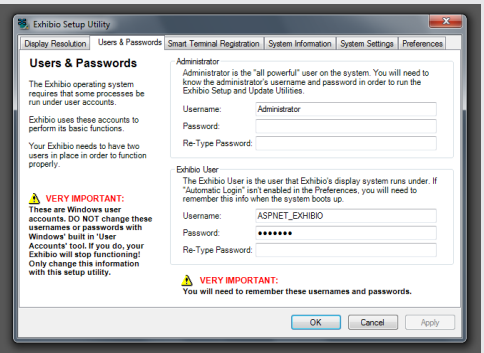


8

Users and Passwords

Change the Administrator and Exhibio user passwords.

Please write down the username and password for both the Administrator and Exhibio User accounts.

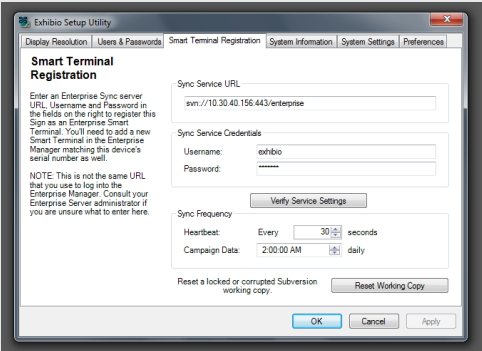


9

Sign Grouping

If you have other Exhibio devices on your

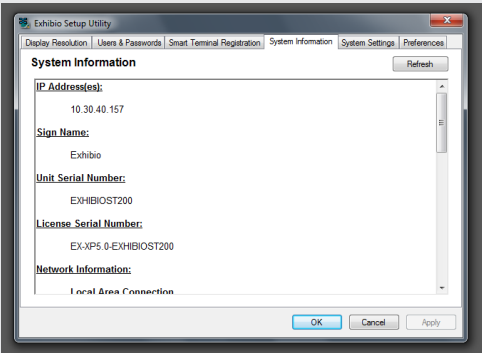
network, you may find them and share content between the systems. Click on ‘Find Signs’ to find any Exhibio devices on your network. Or, you may click on ‘add...’ to add them manually by IP address. Also, you may select the sign in the dialog box, select ‘Edit...’ and change the name of the Exhibio unit.



10

System Information

Write down the network IP address of your unit. This is the address you will input into your web browser to access the Exhibio Manager.

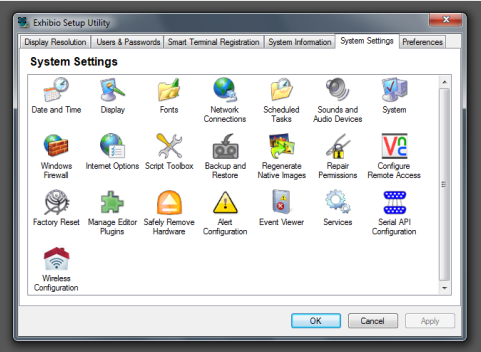


11

System Settings

This section allows complete access to all administrator level settings. Refer to the Software

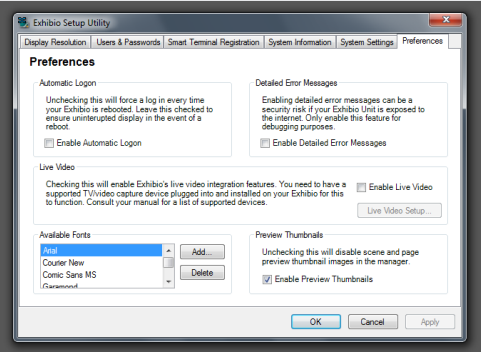
Manual, found on the included USB Key, for detailed information on all tools.



12

Preferences

You may check 'Enable Automatic Logon', which will automatically login to the correct Exhibio User upon restarting. Also, you may check 'Enable Detailed Error Messages'. If you are finished and wish to not setup Live Video or Digital/Analog TV, click 'Finished' and skip to Step 13.



13

Enabling Live Video (Optional)

To activate, ensure the TV Tuner is connected to the Exhibio Unit via USB 2.0, see step 4 for instructions. Once you've verified the TV Tuner is connected, click on 'Enable Live Video' and then

select 'OK'.

Activating Live Video. Please wait for Live Video to activate. This may take several seconds.

Once activation completes, click 'OK' on the dialog box to display the Live Video Setup window.

Click 'OK' on the dialog box to add channels.

Digital Channels.

Click the 'Scan' Icon within the Digital Channels section, Click 'OK' to begin the scan, this can take several minutes. Once completed, a list of available channels will appear under the Digital Channels.

Completed Channels.

After scanning completes, a list of channels will be shown in the background, the Live Video Setup window will be running the first channel that was found during the scan.

You may manually add or remove any channels you wish clicking the 'Add...' and 'Delete' buttons. You may also change channels up and down to preview your video source. Once complete, close out of the Live Video Setup window and click on the 'Finished' button on the Exhibio Setup Utility.

For a list of ATSC (Digital TV) transmissions in your area, input your Zip code at <http://www.titantv.com>. When you see the TV guide information for your area, click the HD only button.

Digital TV reception requires an antenna capable of picking up a strong signal. Go to <http://www.antennaweb.org> to find out what type of antenna you will require.

OTHER INSTRUCTIONS

System Recovery

To restore your system to its initial factory state perform the following steps.

1. Either hit <F11> at the bootup or click the 'Factory Restore' icon on the 'system Settings' tab of the Exhibio Setup Utility.
2. Click the 'Restore System to Initial State' button.
3. Click 'OK'.
4. Click 'OK' when asked 'All data in Windows drive will be deleted upon restoration. Do you want to continue?'.
5. The 'system Restoration' dialog will appear showing the progress of the restore operation.
6. Click 'OK' on the 'Completed Restoration. System is going to be restarted' dialog.

